

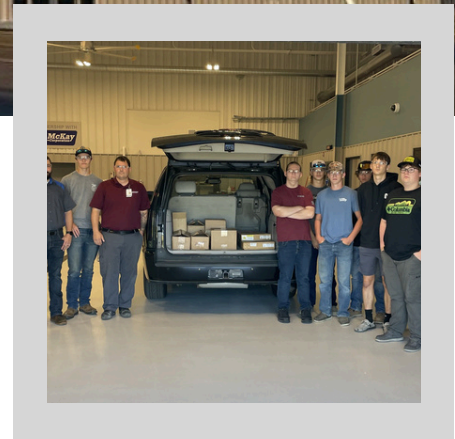
# NEWSLETTER

## SOUTH CENTRAL ILLINOIS REGIONAL WORKFORCE TRAINING AND INNOVATION CENTER



### Back to School

Classes began in mid-August for SCI Fall programming. Those classes include: welding technology, auto technology, construction craft, CNA, IT Jump Start, and Education Pathway. Enrollment is trending up, and will continue to do so as EMT is added in the Spring semester. **To learn more about SCI programming, or to inquire about how you can be a partner, please click the website below.**

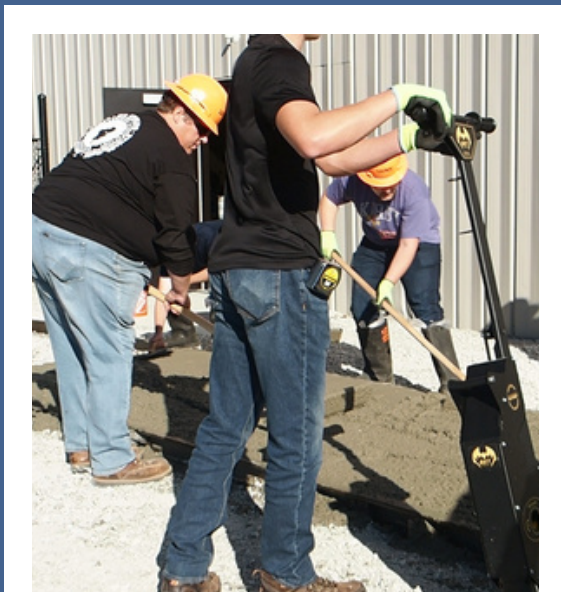


### Welding Gets a New Toy

Thanks to a grant received by Lincoln Land Community College, SCI was able to purchase a plasma cutting table for the Welding Technology program. Mr. Belusko and students have been working on set up, software, and dialing in the laser for cutting metal into precise shapes.

# STUDENTS ATTEND LLCC WORKFORCE EXPO

Students in the Construction Craft, Welding Technology, and Auto Technology classes at SCI took a field trip to Lincoln Land Community College on Thursday, September 19th to attend the Workforce Expo. The Expo featured over 80 employers and booths, tours of facilities, and a lineman's rodeo. This Expo is intended to expose students to both college and career options post high school.



## Jason Jackson

Construction Craft Preparation Program

## STAFF SPOTLIGHT

The Illinois Laborers' & Contractors Joint Apprenticeship and Training Fund is sponsored by the Illinois Laborers' District Councils in conjunction with the Associated General Contractors of Illinois, Central Illinois Builders of AGC, Southern Illinois Builders of AGC, Northern Illinois Builders of AGC and individual contractors throughout the state who contribute to the Fund.

Since 1969, they have been providing training that enhances the skills of our Construction Craft Laborers while expanding the competitiveness of our union contractors.

Jason has been in the union for 23 years and has served as an instructor the past 16 years. Students in the program focus on OSHA training, construction math, general construction, concrete work, and more.


# STUDENT SPOTLIGHT



Students in the CNA class practiced assisted lifting under the watchful eye of instructor, Mrs. Ashley Greenwalt.

## WORKFORCE RESOURCES

Need some training for your employees? LLCC is offering some on-demand workforce training modules tailored to your needs! Flyer pictured, or click this link:  
<https://drive.google.com/file/d/1XIKY2xfVsvSM2hZF8CjIuES61b4hS5Nu/view?usp=sharing>



**Lincoln Land Community College**

5200 Shepherd Rd., P.O. Box 15256 Springfield, IL 62734-0256  
 217-266-2200 • 800-725-4458 • www.llcc.edu  
 Charles J. Warren, Ph.D., President

Due to a Workforce Training Grant provided by the Illinois Community College Board, the below Fall courses are offered to employers in the Litchfield area at a discounted price. Classes will take place at LLCC-Litchfield.

**Classes**

<p><b>Excel 2019/365 Level 1</b>                  Sept. 26-27, 12:30-4 p.m.                  Regular Price \$169/ person                  Discounted Price \$99/person                  Capacity: 12 participants /                  Requires minimum of 5 participants to run.</p>	<p><b>OSHA 10</b>                  October 22-23; 9 a.m.-3 p.m.                  Regular Price \$249/person                  Discounted Price \$99/person                  Capacity: 20 participants /                  Requires minimum of 10 participants to run.</p>	<p><b>Arc Flash</b>                  December 4, 12:30-4:30 p.m.                  Regular Price \$699/person                  Discounted Price \$199/person                  Capacity: 20 participants /                  Requires minimum of 10 participants to run.</p>
---	---	---

**Discounted Pricing**  
 To take advantage of the discounted pricing, employers planning to send staff need to complete this online form before registering staff: <https://forms.gle/3qvWBRxxT1Hs8m7>

**Registering Staff**  
 To register staff for the courses, you can share the below link with staff to complete themselves, or you can complete it on behalf of each staff member: <https://forms.gle/hGp4TcvS292x3d1d6>.  
 If you prefer to bypass this form, you can email the names of those attending trainings to [Continuing.Education@llcc.edu](mailto:Continuing.Education@llcc.edu). If you go this route, staff will be asked to fill out a form the day of class that contains the questions included in the above online form.

**Class Capacities**  
 Class minimums are listed above with each class. Likewise, we also have a maximum number of people we can accept into each class. We will process enrollments in the order in which they are received with it being first come, first served.

**Invoicing**  
 LLCC will send you an invoice after each training session.

**Cancellations**  
 Cancellations must be made at least five business days before the start of a class. Cancellations made less than 5 business days prior to the start of class will be invoiced the regular price. Substitutions are allowable.

**Questions:** [Continuing.Education@llcc.edu](mailto:Continuing.Education@llcc.edu)